

AVAILABLE IMMEDIATELY

1,700 S.F. OF NEW DENTAL SPACE AVAILABLE

Class "A" Space • Well Established Medical Office Building • 485B Real Property Tax Incentive

Equipped • Turn-Key Start Up



**Great Expansion
Opportunity**

For more information call (845) 897-3800 or visit www.westage.com
Inquire Now • Don't miss this opportunity

Westage Pavilion

Middletown, New York



Westage Pavilion
75 Crystal Run Road
Middletown, New York

Westage Pavilion

Middletown, New York

DENTAL SUITE
Suite 235

AVAILABLE IMMEDIATELY

Class "A" Space

1,700 Square Feet of New Dental Space

485 Real Property Tax Incentive

Well Established Medical Office Building

Opportunity for Expansion Available

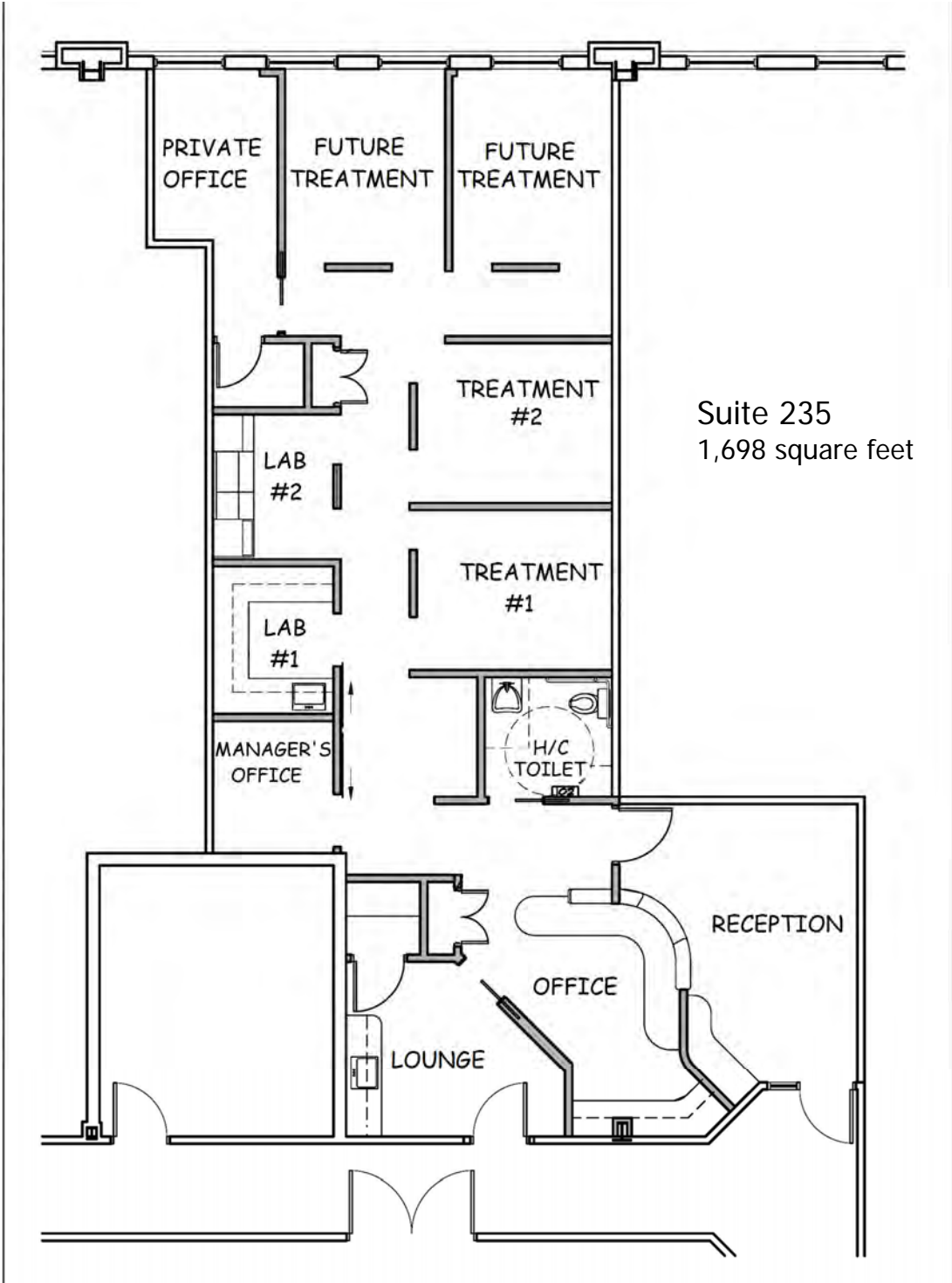
Equipped

Turn-Key Start Up



Westage Pavilion

Middletown, New York



Westage Pavilion

Middletown, New York

The Westage Pavilion is an 83,000 square foot building located at 75 Crystal Run Road in Middletown, New York near the intersection of Routes I-84 and 17. The building is less than 1 mile to Orange Regional Medical Center's new hospital.

Current Tenants:

Hudson Valley Ambulatory Surgery
Orange Regional Medical Center - Administrative Offices
Orange Regional Medical Center - Center for Sleep Medicine
Orange Urgent Care
Ray W. Moody, MD Breast Center
Hudson Valley ENT
Stefan G. Chevalier, DO, PC—Plastic & Reconstructive Surgery
Dr. Giudici, MD, MAR, PC, Internal Medicine & Psychiatry
Catskill Orange Orthopaedics, PC
Medi-Fair Home Health Care Equipment
Tri-State Eye
Ettinger Law

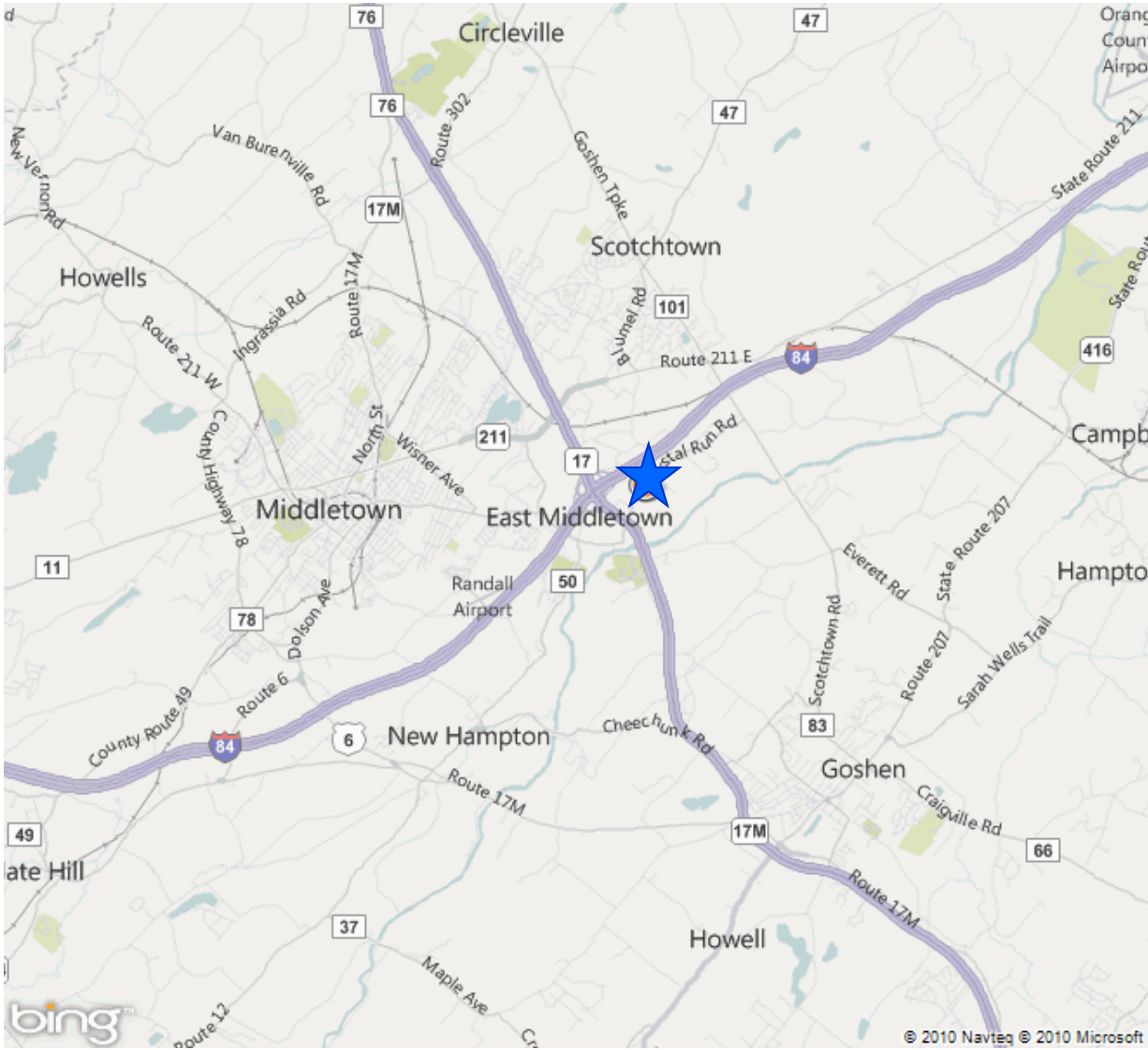
Additional Hospital Services:

Ambulatory Surgery
Cancer Care
Cardiac Care
Diabetes Treatment
Diagnostic Imaging
Dialysis Laboratory
Maternity / OB-GYN
Nutrition Services



Westage Pavilion

Middletown, New York



Westage Pavilion

Middletown, New York

Westage Companies

200 Westage Business Center, Ste. 120
Fishkill, NY 12524

Phone

845.897.3800

Fax

845.897.3790

www.westage.com

E-mail

westage.leasing@westage.com

